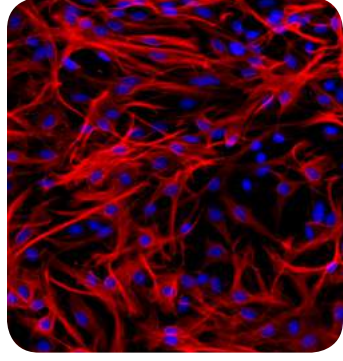
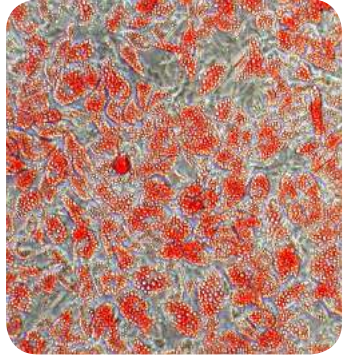
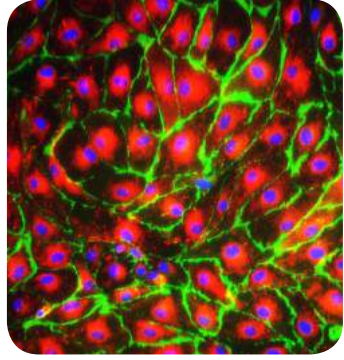
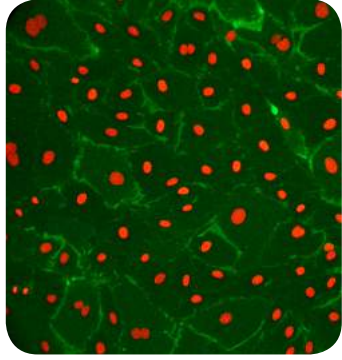
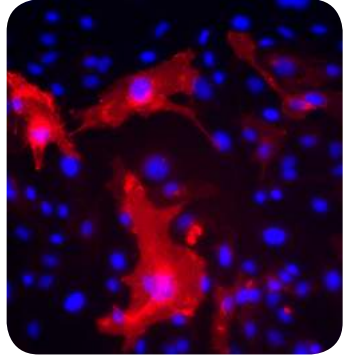
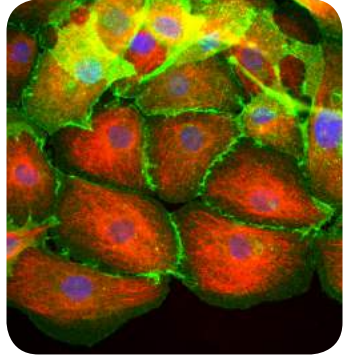
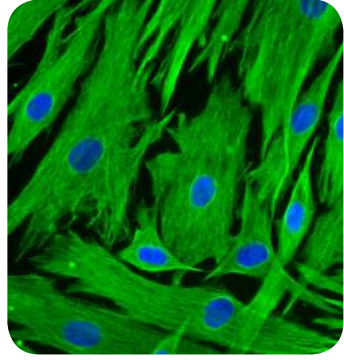
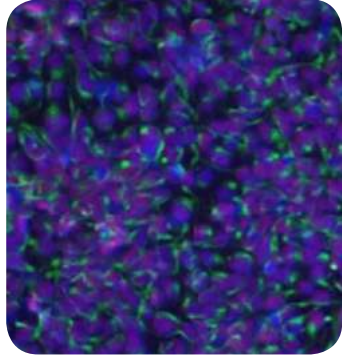
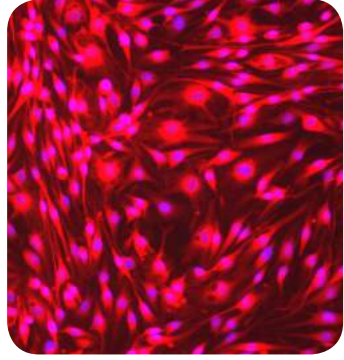
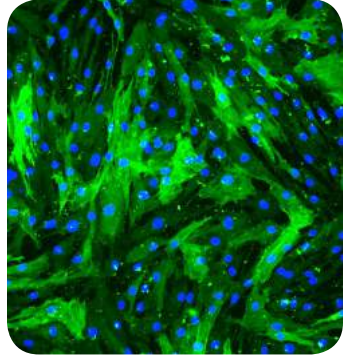


## Primary Cells

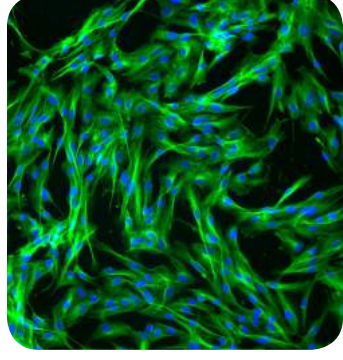
## Media & Reagents

## Cell Biology

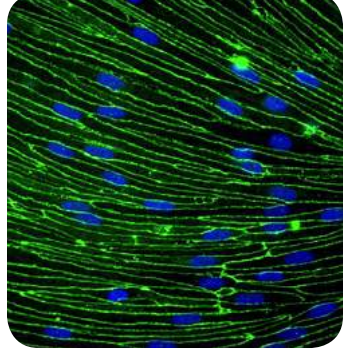


### CARDIOVASCULAR

**Blood**  
B Cell (H)  
Dendritic (H)  
Hematopoietic Progenitor (H)  
Macrophage (R)  
Microglia (R)  
Monocyte (H)  
Mononuclear (H)  
PBMC (H)  
T Cell (H)

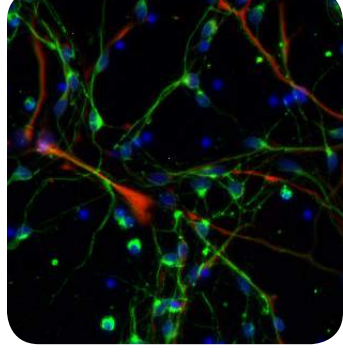


**Endothelial**  
Aortic (H, B, Cn, P, R)  
Brachiocephalic Artery (H)  
Carotid Artery (H)  
Coronary Artery (H, B, P)  
Internal Thoracic Artery (H)  
Pulmonary Artery (H, B, P)  
Renal Artery (B)  
Subclavian Artery (H)  
Umbilical Artery (H)  
Umbilical Vein (H)



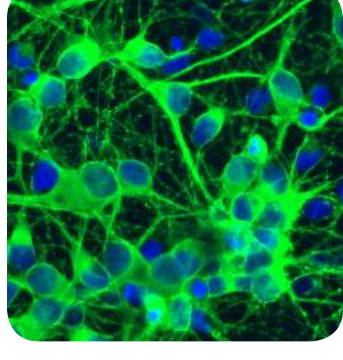
**Heart**  
Cardiomyocyte (R)  
Cardiac Fibroblast (H, R)

**Microvascular Endothelial**  
Brain (B, R)  
Dermal Lymphatic (H)  
Dermal (H)  
Lung (H)



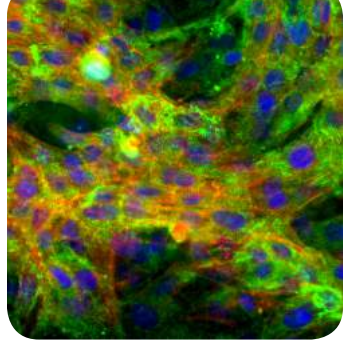
### MUSCULAR SYSTEM

Aortic Smooth Muscle (H, B, C, Cn, P, R, Rb)  
Brachiocephalic Artery Smooth Muscle (H)  
Carotid Artery Smooth Muscle (H)  
Coronary Artery Smooth Muscle (H, B, Cn, P)  
Internal Thoracic Artery Smooth Muscle (H)  
Pulmonary Artery Smooth Muscle (H, B, Cn, P, R)  
Renal Artery Smooth Muscle (B)  
Skeletal Muscle (H, Cn, F, R, Rb)  
Subclavian Artery Smooth Muscle (H)  
Umbilical Artery Smooth Muscle (H)  
Umbilical Vein Smooth Muscle (H)



### BONE & JOINT

Chondrocyte (H, Cn, F)  
Hematopoietic Progenitor (H)  
Marrow Stromal (H, Cn, F, R)  
Osteoblast (H, Cn, F, R)  
Synoviocyte (H)



### EPITHELIAL

Bladder (H)	Placental (H)
Bronchial (H)	Prostate (H)
Cervical (H)	Renal Glomerular (H)
Corneal (H, Rb)	Renal Proximal (H)
Endometrial (B)	Tracheal (H)
Mammary (H)	Urethra (H)

### STEM CELLS

Induced Pluripotent (H)  
Hematopoietic (H)  
iPSC-Derived Beta Islet (H)  
iPSC-Derived Cardiac (H)  
iPSC-Derived Hepatic (H)  
iPSC-Derived Neural (H)  
Mesenchymal (H, C, R)  
Neural (H, M, R)

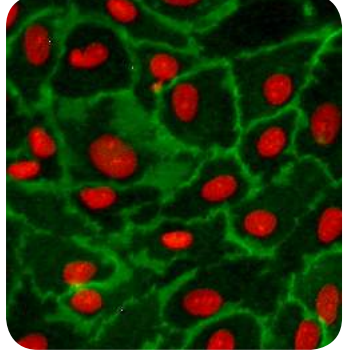
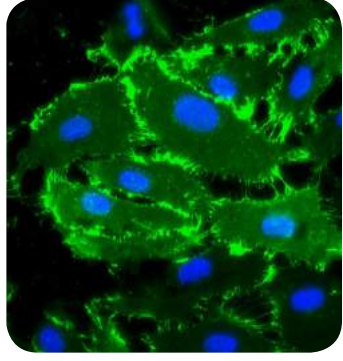
### VISION

Corneal Epithelial (H, R)  
Trabecular Meshwork (H)



### NERVOUS

Astrocyte (H,R)  
Brain Neuron (H)  
Cortical Neuron (R)  
Dorsal Root Ganglion Neuron (R)  
Hindbrain Neuron (R)  
Hippocampal Neurons (R)  
Midbrain Neurons (R)  
Perineurial Fibroblast (H)  
Schwann (R)  
Spinal Cord Neurons (R)  
Striatal Neurons (R)

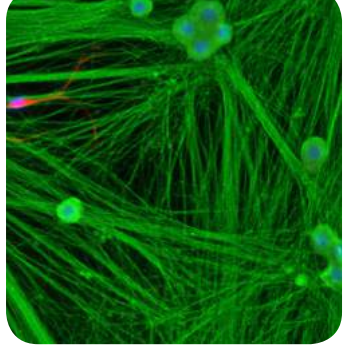
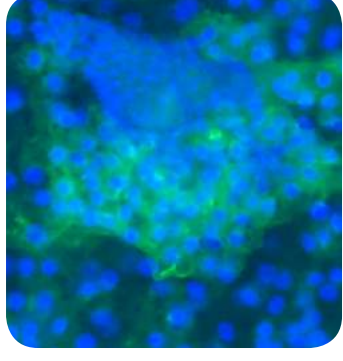


### AIRWAY

Bronchial Epithelial (H)  
Lung Fibroblast (H, R)  
Lung Microvascular Endothelial (H)  
Pulmonary Artery Endothelial (H, B, P)  
Tracheal Epithelial (H)

### INTEGUMENTARY

**Epidermal/Dermal**  
Dermal Fibroblast (H)  
Epidermal Keratinocyte (H, R)  
Epidermal Melanocyte (H)  
Hair Follicle Dermal Papilla (H)



**Fat**  
Adipocyte (H)  
Pre-Adipocyte (H)

**Microvascular Endothelial**  
Dermal (H)  
Dermal Lymphatic (H)

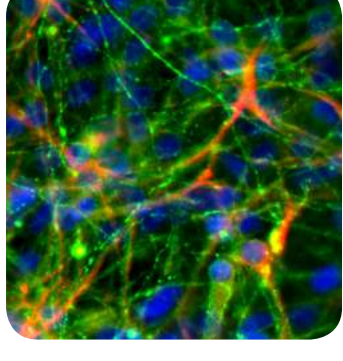
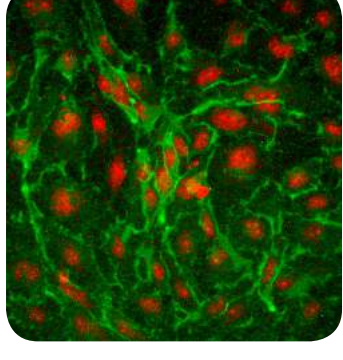
### SPECIALTY & CUSTOM

**3D Cell Bioprinting**  
Tissue engineering with primary cells

**3D Cellular Tissue Models**  
Airway (Bronchial Epithelial Cells, H)  
Skin (Epidermal Keratinocytes, H)

**Cellular Disease Models**  
Asthma  
COPD  
Osteoarthritis  
Rheumatoid Arthritis  
Type 2 Diabetes

**Liver Cells**  
Hepatocytes (R)



### KEY

Human (H)	Feline (F)	<b>Others (Custom)</b>
Bovine (B)	Mouse (M)	Guinea Pig
Chicken (C)	Porcine (P)	Hamster
Canine (Cn)	Rat (R)	Monkey
	Rabbit (Rb)	Sheep

