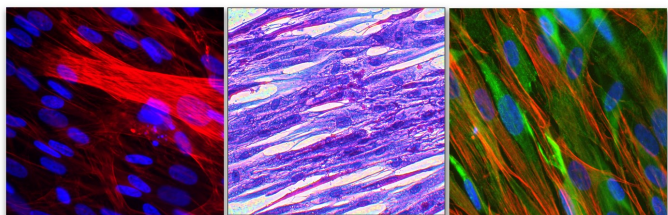


CELL


APPLICATIONS, INC.

Published on *Cell Applications* (<https://www.cellapplications.com>)

[Home](#) > [Primary Cells](#) > [Cell](#) > [Skeletal Muscle](#)



Skeletal Muscle Cells generate force for movement, and function in posture support, heat production, metabolic regulation & homeostasis. Their metabolic dysfunction leads to various diseases. Cultured SkMC are used for biomedical studies, cell signaling & drug discovery. The Cells play roles in glucose metabolism & diabetes, so pre-screened SkMC are confirmed for AMPK signaling & insulin responsiveness

 Biocompare ^[1]

^[1]

^[2]

^[3]

Misc. Links

-
-
-
-
-
-
-

[Site](#)
[Privacy](#)
[Returns](#)
[Shipping](#)
[Terms](#)
[Disclaimer](#)
[Distributors](#)

Contact Us

Cell Applications, Inc
6455 Weathers Place
San Diego, CA 92121

Open M-F, 8am-5pm PST

858-453-0848

info@cellapplications.com

Socialize With Us

•

Stay Informed

Leave this field blank

Submit

Source URL:<https://www.cellapplications.com/skeletal-muscle>

Links

[1] <http://www.biocompare.com/Product-Reviews/187187-Primary-muscle-cells-for-differentiation-in-vitro/?arev=true> [2] http://cellapplications.com/product_desc.php?id=45

[3] <https://www.cellapplications.com/skeletal-muscle>