

CELL **APPLICATIONS, INC.**

Published on *Cell Applications* (<https://www.cellapplications.com>)

[Home](#) > [Primary Cells](#) > [Tissue](#) > Cardiac

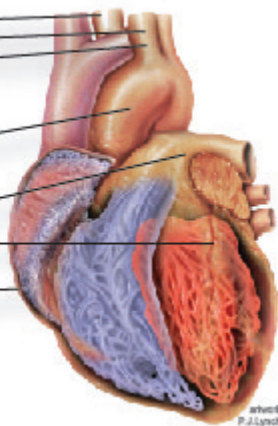
Heart Cells

Brachiocephalic Artery EC and SMC (H)
Carotid Artery EC and SMC (H)
Subclavian Artery EC and SMC (H)
Internal Thoracic Artery EC and SMC (H)

Aortic EC and SMC (H, B, C, Cn, P, R, Rb)
Adventitial Fibroblasts (H)

Pulmonary Artery EC and SMC (H, B, P)
Coronary Artery EC and SMC (H, B)

Cardiomyocytes (R)
Cardiac Fibroblasts (H, R)



Large Vessels Cells

Renal Artery EC and SMC (B)
Umbilical Artery EC and SMC (H)
Umbilical Vein EC and SMC (H)

Microvascular Cells

Brain Microvascular EC (B, R)
Dermal Lymphatic Microvascular EC (H)
Dermal Microvascular EC (H)
Lung Microvascular Endothelial Cells (H)

CELL TYPES:
EC: Endothelial Cells, SMC: Smooth Muscle Cells
SPECIES:
H: Human, B: Bovine, C: Chicken,
Cn: Canine, P: Porcine, R: Rat, Rb: Rabbit

[1]

Misc. Links

-
-
-
-
-
-
-
-

[Site](#)
[Privacy](#)
[Returns](#)
[Shipping](#)
[Terms](#)
[Disclaimer](#)
[Distributors](#)

Contact Us

Cell Applications, Inc
6455 Weathers Place
San Diego, CA 92121
Open M-F, 8am-5pm PST

858-453-0848

info@cellapplications.com

Socialize With Us

•

Stay Informed

Leave this field blank
Submit

Source URL:<https://www.cellapplications.com/cardiac>

Links

[1] <https://www.cellapplications.com/cardiac>