

CELL APPLICATIONS, INC.

Published on *Cell Applications* (<https://www.cellapplications.com>)

[Home](#) > Anti-GOT-2: Mouse Glutamic-Oxaloacetic Transaminase 2 Monoclonal Antibody

Anti-GOT-2: Mouse Glutamic-Oxaloacetic Transaminase 2 Monoclonal Antibody

- Description
- Details
- Products
- Resources

Product Sheet CP10117

Description

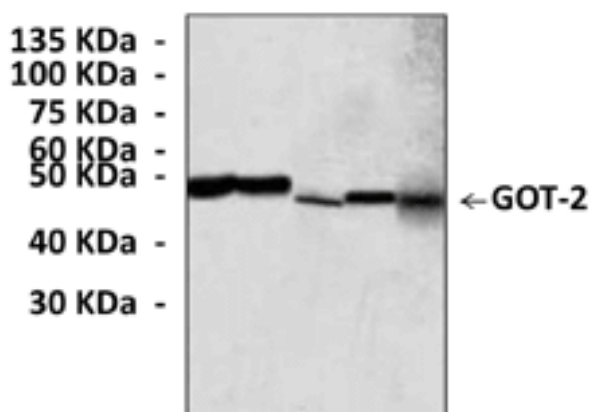
BACKGROUND Glutamic-oxaloacetic transaminase is a pyridoxal phosphate-dependent enzyme which exists in cytoplasmic and inner-membrane mitochondrial forms, GOT1 and GOT2, respectively. GOT plays a role in amino acid metabolism and the urea and tricarboxylic acid cycles. The two enzymes are homodimeric and show close homology. GOT2 is important for metabolite exchange between mitochondria and cytosol. It facilitates cellular uptake of long-chain free fatty acids.¹

GOT is normally present in liver and heart cells. Serum GOT (SGOT) is released into blood when the liver or heart is damaged. The blood SGOT levels are thus elevated with liver damage (for example, from viral hepatitis) or with an insult to the heart (for example, from a heart attack). Some medications can also raise SGOT levels. SGOT is also called aspartate aminotransferase (AST).²

REFERENCES

1. Morino, Y. et al: Biochem. and Biophys. Res Commun. 13: 348-53, 1963
2. Gaze, D.C.: Curr. Opin. Invest. Drugs 8:711–717, 2007

Products are for research use only. They are not intended for human, animal, or diagnostic applications.



[1]
(Click to Enlarge) **Top:** Western Blot detection of GOT-2 proteins in various cell lysates using GOT-2 Antibody. **Bottom:** This antibody stains PC-3 cells in confocal immunofluorescent analysis (GOT-2 Antibody: Green; Actin filament: Red; DRAQ5 DNA dye: Blue).

Details

Cat.No.:	CP10117	
Antigen:	Purified recombinant human GOT-2 fragment expressed in <i>E. coli</i> .	
Isotype:	Mouse IgG	
Species & predicted species cross-reactivity ():	Human, Mouse, Rat	
Applications & Suggested starting dilutions:*	WB	1:1000
	IP	n/d
	IHC	n/d
	ICC	1:200
	FACS	n/d
Predicted Molecular Weight of protein:	47 kDa	
Specificity/Sensitivity:	Detects endogenous GOT-2 proteins without cross-reactivity with other related proteins.	
Storage:	Store at -20°C, 4°C for frequent use. Avoid repeated freeze-thaw cycles.	

*Optimal working dilutions must be determined by end user.

Products

Resources/Documents

[Product Sheet CP10117](#) [2]

Misc. Links

-
-
-
-
-
-
-

[Site](#)
[Privacy](#)
[Returns](#)
[Shipping](#)
[Terms](#)
[Disclaimer](#)
[Distributors](#)

Contact Us

Cell Applications, Inc
6455 Weathers Place
San Diego, CA 92121
Open M-F, 8am-5pm PST

800-645-0848
info@cellapplications.com

Socialize With Us

-

Newsletter Signup

[Subscribe to our newsletter](#)

Source URL:<https://www.cellapplications.com/anti-got-2-mouse-glutamic-oxaloacetic-transaminase-2-monoclonal-antibody>

Links

[1] https://www.cellapplications.com/sites/default/files/images_product_type/FileCat000szrcpsg.gif

[2] <https://www.cellapplications.com/sites/default/files/documents/product-sheets/Product Sheet CP10117 GOT-2.pdf>