



APPLICATIONS, INC.

Published on *Cell Applications* (<https://www.cellapplications.com>)

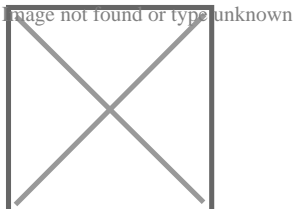
[Home](#) > Cytofect™ Endothelial Cell Transfection Kit

Cytofect™ Endothelial Cell Transfection Kit

- Description
- Details
- Products
- Resources

[Instructions TF101K](#)
[Instructions TF101KS](#)

Description



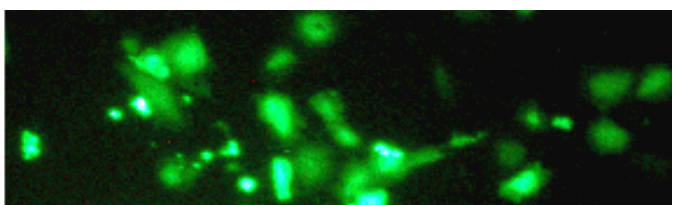
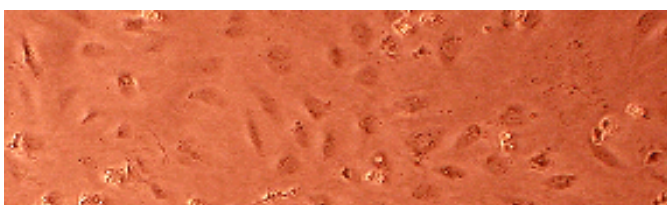
Transfection, the introduction of nucleic acid into cells, is a powerful technique used to study *in vivo* gene function and regulation. The Cytofect™ Endothelial Cell Transfection kit is a plasmid DNA delivery system specifically optimized to deliver DNA into a wide variety of endothelial cells. This kit contains Cytofect-2, Enhancer, and Media for transfection and culturing cells. Peptide Enhancer complexes with DNA and Cytofect-2 and escorts the transfection complex to the nucleus. This results in high transfection efficiency and viability for these traditionally hard-to-transfect primary endothelial cells.

#Wells / Rxns

96 / 1000
24 / 250
12 / 125

The Kit contains all necessary reagents, media and optimized protocols to carry out successful transfection of endothelial cells with high efficiency (40%-85%) and viability (80%-95%).

Products are for research use only. They are not intended for human, animal, or diagnostic applications. TR1 and PE are manufactured by Targeting Systems.



[1]
(Click to Enlarge) Transfection of HUVEC (Top) and HCAEC (Bottom) with a GFP-expression plasmid using the Cytofect-HUVEC and Endothelial Cell Transfection Kits, respectively.

Details

Kit Contents:	Cytofect-2 Peptide Enhancer (PE) Antibiotics-Free Growth Medium Transfection Medium
Related products:	HAOEC HCAEC HDLMVEC HDMVEC HPAEC HLMVEC HPAEC HUVEC BAOEC BCAEC BPAEC PPAEC RAOEC RBMVEC Human Endothelial Cells Animal Endothelial Cells Cytofect HUVEC Transfection Kit Cytofect Epithelial Cell Transfection Kit Cytofect Fibroblast Transfection Kit Cytofect Cell Line Transfection Kit

Designed to improve transfection efficiency and cell viability, Cytofect is a plasmid DNA delivery system containing Cytofect-2, Enhancer and Media for transfecting and culturing cells. The Enhancer is an endosomolytic peptide that complexes with DNA and Cytofect-2, then escorts the transfection complex to the nucleus. The results are high transfection efficiency and viability for traditionally hard-to-transfect cells.

Instructions TF101K

Format: PDF

[Download Now](#) [2]

Instructions TF101KS

Format: PDF

[Download Now](#) [3]

Products

Related Products

Resources/Documents

Misc. Links

- [Site](#)
- [Privacy](#)
- [Returns](#)
- [Shipping](#)
- [Terms](#)
- [Disclaimer](#)
- [Distributors](#)

Contact Us

Cell Applications, Inc
6455 Weathers Place
San Diego, CA 92121
Open M-F, 8am-5pm PST

858-453-0848
info@cellapplications.com

Socialize With Us

-

Stay Informed

Submit

Source URL: <https://www.cellapplications.com/cytofect-endothelial-cell-transfection-kit>

Links

- [1] https://www.cellapplications.com/sites/default/files/images_product_type/FileCat000dwxphlv.gif
[2] <https://www.cellapplications.com/sites/default/files/documents/instructions/Instructions TF101K Cytofect-Endothelial Cell Transfection.pdf>
[3] <https://www.cellapplications.com/sites/default/files/documents/instructions/Instructions TF101KS Cytofect-Endothelial Cell Transfection Sample Kit.pdf>