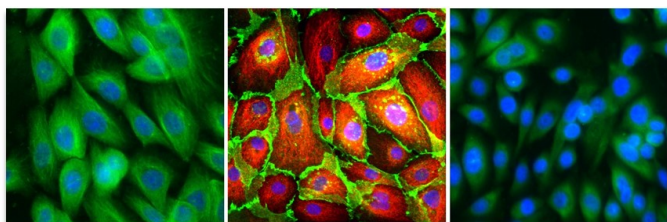


CELL

APPLICATIONS, INC.

Published on *Cell Applications* (<https://www.cellapplications.com>)

[Home](#) > [Primary Cells](#) > [Cell](#) > Epithelial



Epithelial Cells (EpC) line the surfaces and cavities of tissues and organs throughout the body, functioning primarily for protection, secretion, selective absorption, and trans-cellular transport. They also comprise key structures of urogenital glands and organs. Our EpC, from several body systems, are high purity, low passage, rigorously characterized, and performance tested. They are available as cryovials or as proliferating cells in flasks or multi-well plate formats. For your convenience, cryopreserved epithelial cells are offered as part of user-friendly total kits that include optimized Epithelial Cell Media and subculture reagent kits, and the highly efficient Cytofect™ Epithelial Cell Transfection Kit.

[1]

Misc. Links

-
-
-
-
-
-
-

[Site](#)
[Privacy](#)
[Returns](#)
[Shipping](#)
[Terms](#)
[Disclaimer](#)
[Distributors](#)

Contact Us

Cell Applications, Inc
6455 Weathers Place
San Diego, CA 92121
Open M-F, 8am-5pm PST

858-453-0848
info@cellapplications.com

Socialize With Us

-

Stay Informed

Leave this field blank
Submit

Source URL:<https://www.cellapplications.com/epithelial>

Links

[1] <https://www.cellapplications.com/epithelial>