

CELL APPLICATIONS, INC.

Published on *Cell Applications* (<https://www.cellapplications.com>)

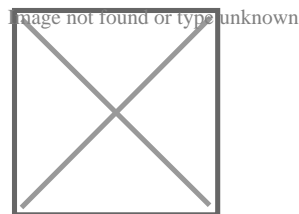
[Home](#) > Cytofect™ Endothelial Cell Transfection Kit

Cytofect™ Endothelial Cell Transfection Kit

- Description
- Details
- Products
- Resources

Instructions TF101K
Instructions TF101KS

Description



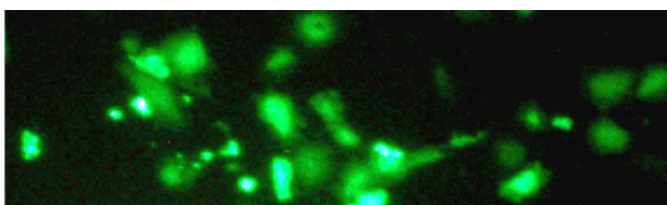
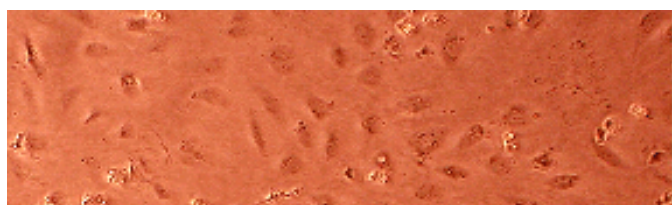
Transfection, the introduction of nucleic acid into cells, is a powerful technique used to study in vivo gene function and regulation. The Cytofect™ Endothelial Cell Transfection kit is a plasmid DNA delivery system specifically optimized to deliver DNA into a wide variety of endothelial cells. This kit contains Cytofect-2, Enhancer, and Media for transfection and culturing cells. Peptide Enhancer complexes with DNA and Cytofect-2 and escorts the transfection complex to the nucleus. This results in high transfection efficiency and viability for these traditionally hard-to-transfect primary endothelial cells.

#Wells / Rxns

96 / 1000
24 / 250
12 / 125

The Kit contains all necessary reagents, media and optimized protocols to carry out successful transfection of endothelial cells with high efficiency (40%-85%) and viability (80%-95%).

Products are for research use only. They are not intended for human, animal, or diagnostic applications. TR1 and PE are manufactured by Targeting Systems.



[1]
(Click to Enlarge) Transfection of HUVEC (Top) and HCAEC (Bottom) with a GFP-expression plasmid using the Cytofect-HUVEC and Endothelial Cell Transfection Kits, respectively.

Details

Kit Contents:	Cytofect-2
	Peptide Enhancer (PE)
Related products:	Antibiotics-Free Growth Medium
	Transfection Medium
	HAOEC
	HCAEC
	HDLMVEC
	HDMVEC
	HPAEC
	HLMVEC
	HPAEC
	HUVEC
	BAOEC
	BCAEC
	BPAEC
	PPAEC
	RAOEC
	RBMVEC
	Human Endothelial Cells
	Animal Endothelial Cells
	Cytofect HUVEC Transfection Kit
	Cytofect Epithelial Cell Transfection Kit
	Cytofect Fibroblast Transfection Kit
	Cytofect Cell Line Transfection Kit

Designed to improve transfection efficiency and cell viability, Cytofect is a plasmid DNA delivery system containing Cytofect-2, Enhancer and Media for transfecting and culturing cells. The Enhancer is an endosomolytic peptide that complexes with DNA and Cytofect-2, then escorts the transfection complex to the nucleus. The results are high transfection efficiency and viability for traditionally hard-to-transfect cells.

Instructions TF101K

Format: PDF

[Download Now](#) [2]

Instructions TF101KS

Format: PDF

[Download Now](#) [3]

Products

Related Products

Resources/Documents

Misc. Links

- [Site](#)
- [Privacy](#)
- [Returns](#)
- [Shipping](#)
- [Terms](#)
- [Disclaimer](#)
- [Distributors](#)

Contact Us

Cell Applications, Inc
6455 Weathers Place
San Diego, CA 92121
Open M-F, 8am-5pm PST

858-453-0848
info@cellapplications.com

Socialize With Us

-

Stay Informed

Leave this field blank
Submit

Source URL:<https://www.cellapplications.com/cytofect-endothelial-cell-transfection-kit>

Links

- [1] https://www.cellapplications.com/sites/default/files/images_product_type/FileCat000dwxphlv.gif
[2] [https://www.cellapplications.com/sites/default/files/documents/instructions/Instructions TF101K
Cytofect-Endothelial Cell Transfection.pdf](https://www.cellapplications.com/sites/default/files/documents/instructions/Instructions%20TF101K%20Cytofect-Endothelial%20Cell%20Transfection.pdf)
[3] [https://www.cellapplications.com/sites/default/files/documents/instructions/Instructions TF101KS
Cytofect-Endothelial Cell Transfection Sample Kit.pdf](https://www.cellapplications.com/sites/default/files/documents/instructions/Instructions%20TF101KS%20Cytofect-Endothelial%20Cell%20Transfection%20Sample%20Kit.pdf)