

# CELL APPLICATIONS, INC.

Published on *Cell Applications* (<https://www.cellapplications.com>)

[Home](#) > Cytofect™ Epithelial Cell Transfection Kit

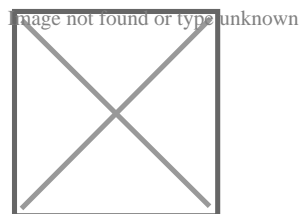
---

## Cytofect™ Epithelial Cell Transfection Kit

- Description
- Details
- Products
- Resources

Instructions TF102K  
Instructions TF102KS

### Description



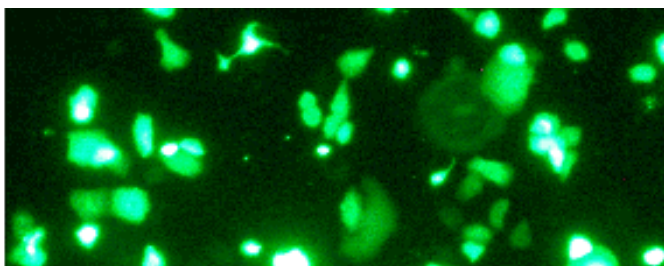
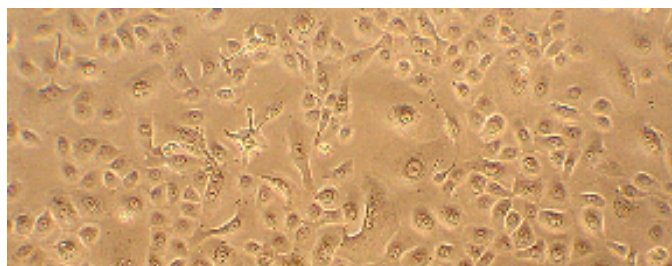
Transfection, the introduction of nucleic acid into mammalian cells, is a powerful technique used to study *in vivo* gene function and regulation. The Cytofect™ Epithelial Cell Transfection kit is a plasmid DNA delivery system specifically optimized to deliver DNA into a wide variety of epithelial cells. This kit contains Cytofect-1, Enhancer and Media for transfection and culturing cells. Viral Enhancer has the ability to complex with unmodified DNA via cationic Cytofect-1 and protect the transfected DNA from lysosomal degradation. This results in high transfection efficiency and viability for these traditionally hard-to-transfect primary epithelial cells.

#### #Wells / Rxns

96 / 620  
24 / 124  
12 / 62

The Kit contains all necessary reagents, media and optimized protocols to carry out successful transfection of epithelial cells with high efficiency (40%-70%) and viability (70%-95%).

*Products are for research use only. They are not intended for human, animal, or diagnostic applications. \*Viral Enhancer (VE) is a replication-deficient, Adenovirus-derived formulation that does not contain replication competent virus. TR1 and VE are manufactured by Targeting Systems.*



(Click to Enlarge) Transfection of HEK (Top) and HMEpC (Bottom) with a GFP-expression plasmid using the Cytofect™ Epithelial Cell Transfection Kit.

## Details

**Kit Contents:** Cyrofect-1  
Viral Enhancer (VE)\*  
Antibiotics-Free Growth Medium  
Transfection Medium  
Transfection Medium with Serum

Designed to improve transfection efficiency and cell viability, Cytofect is a plasmid DNA delivery system containing Cytofect-2, Enhancer and Media for transfecting and culturing cells. The Enhancer is an endosomolytic peptide that complexes with DNA and Cytofect-2, then escorts the transfection complex to the nucleus. The results are high transfection efficiency and viability for traditionally hard-to-transfect cells.

**Instructions TF102K**

Format: PDF

[Download Now](#) [2]

**Instructions TF102KS**

Format: PDF

[Download Now](#) [3]

## Products

## Related Products

## Resources/Documents

## Misc. Links

- [Site](#)
- [Privacy](#)
- [Returns](#)
- [Shipping](#)
- [Terms](#)
- [Disclaimer](#)
- [Distributors](#)

## Contact Us

**Cell Applications, Inc**  
6455 Weathers Place  
San Diego, CA 92121  
Open M-F, 8am-5pm PST

**858-453-0848**  
**info@cellapplications.com**

## Socialize With Us

•

## Stay Informed

Leave this field blank  
Submit

---

**Source URL:**<https://www.cellapplications.com/cytofect-epithelial-cell-transfection-kit>

### Links

[1] [https://www.cellapplications.com/sites/default/files/images\\_product\\_type/FileCat000nfwjjza.gif](https://www.cellapplications.com/sites/default/files/images_product_type/FileCat000nfwjjza.gif)

[2] [https://www.cellapplications.com/sites/default/files/documents/instructions/Instructions TF102K  
Cytofect-Epithelial Cell Transfection.pdf](https://www.cellapplications.com/sites/default/files/documents/instructions/Instructions%20TF102K%20Cytofect-Epithelial%20Cell%20Transfection.pdf)

[3] [https://www.cellapplications.com/sites/default/files/documents/instructions/Instructions TF102KS  
Cytofect-Epithelial Cell Transfection Sample Kit.pdf](https://www.cellapplications.com/sites/default/files/documents/instructions/Instructions%20TF102KS%20Cytofect-Epithelial%20Cell%20Transfection%20Sample%20Kit.pdf)